



**Pilous**

Železná 9, 619 00 Brno, Czech Republic

Tel.: +420 543 25 20 10

e-mail: [wood@pilous.cz](mailto:wood@pilous.cz), [www.pilous.cz](http://www.pilous.cz)

## CTR 710



4140 x 35-41 x 0,9-1,1 mm

Max. log diameter	710 mm
Max. opening between blade guides	660 mm
Max. elevation of blade	630 mm
Min. log height	25 mm
Max. depth of cut	450 mm
Max. log length (standard model)	2,1 m
Length track section	1 m / 3 m
Min. log length	1 m
Saw blade motor	5,5 (7,5) kW
Horizontal feed motor	0,37 kW
Vertical feed motor	0,55 kW
Sawblade	4140 x 35÷40 x 0,9÷1,1 mm
Weight (standard model)	680 kg
Weight (track section)	25 kg / 97 kg

**Nominal current of circuit breaker is minimally 20 / 32 Ampere**

## DESCRIPTION

**Feed into the cut and back - motor-powered**  
**Arm height adjustment - motor-powered**  
**Control panel - on a mobile bridge**  
**Log handling - manual**

Smaller, but truly professional sawmill in all respects. Execution of main technical parts, such as the running wheels in their mounts, construction of the sawmill arm, engine and feeding systems, etc., are completely identical to those in CTR 800 series or in very powerful CTR 1000 H/40. Continuously adjustable machine feed into the cut and back and sawmill arm height adjustment. Forward/backward speed is displayed on the digital display.

The movement into and out of the cut is provided by a worm-gearbox electric motor controlled by a frequency inverter. The travel speed can be changed simply by turning the potentiometer knob on the control panel. The end positions are secured against impact by automatic deceleration and stopping. The control panel is mounted on the travelling bridge of the sawmill arm. This allows closer contact between the operator and the material to be cut during cutting.

The basic version of the machine is equipped with a powerful 5.5 kW motor. For even higher performance, for example when cutting oversized logs or even when cutting very hard materials, especially with Stellite-tipped blades a 7.5 kW motor can be used.

The massive sawmill arm is borne on adjustable hard-chromium rods (for moving up and down) which ensure absolute accuracy of sawmill arm movement and virtually unlimited service life, if the machine is lubricated regularly. The vertical movement of the arm is provided by double-sided synchronous chain transmission powered by an electric motor with worm gearbox.

The desired cutting thickness can be simply set on the touch screen with the option of setting the required kerf width. The movement of the arm, controlled by a frequency inverter with deceleration in the end positions, guarantees precise automatic setting to the desired values. Simple, intuitive operation on the colour touch screen controlled by a new-generation operating system allows a choice of four programming cutting modes. It is possible to set the repetition of a constant or variable thickness of lumber. It is also possible to choose between two methods of automatic arm exit after the cut, either to a fixed height or by the last measure.

The arm is fitted with running wheels made of high-quality grey cast iron with accurate balancing against vibrations. The wheel has a groove along its circumference. The groove holds a replaceable rubber-textile belt which creates an optimum contact area between the wheel and the saw blade.

The sturdily mounted running wheel is powered through a V-belt by a professional electrical motor specially balanced against vibrations.

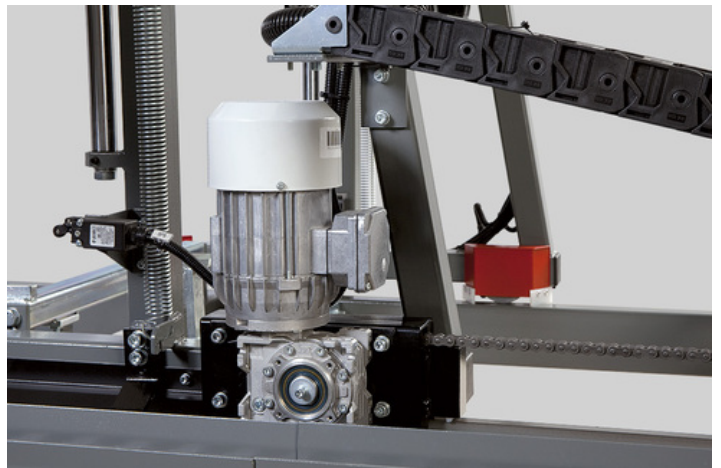
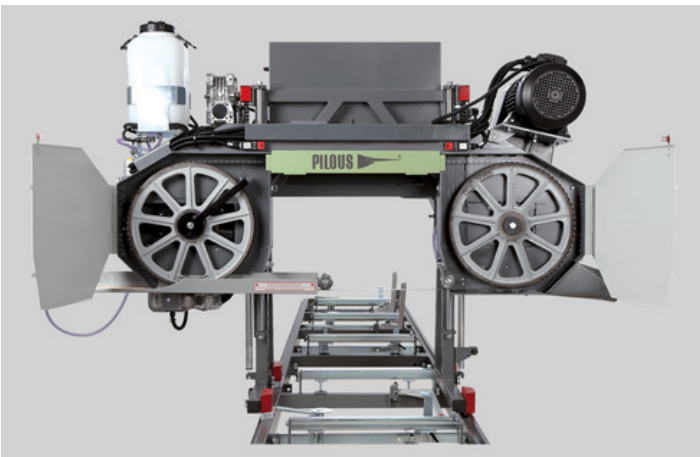
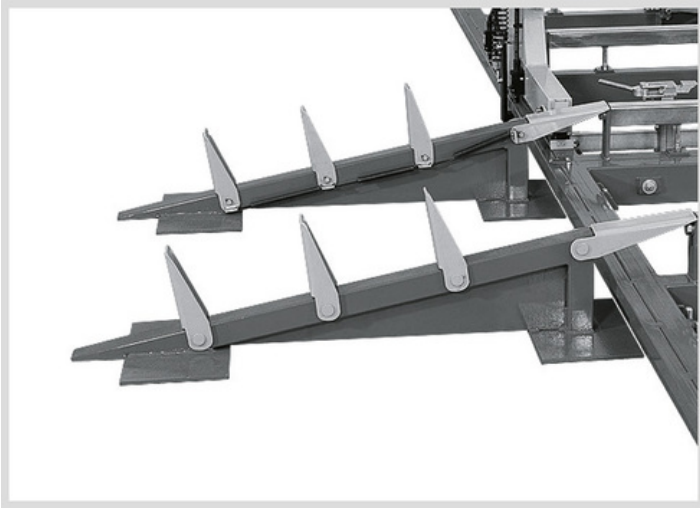
The tensioning wheel system moves along a sturdy cast iron dovetail slide with screws and a bar for fine-tuning, which allows highly accurate adjustment without any free travel even in long-term machine operation.

The CTR model series represents the latest trends in sawmill design, with special emphasis on maximum accuracy and long service life at minimum cost. The machines are designed in an original modular way, which allows easy replacement or adjustment of all main technical nodes and their individual parts. This significantly reduces maintenance costs in the long-term use of the machine and also reduces service times, thus reducing production downtime.

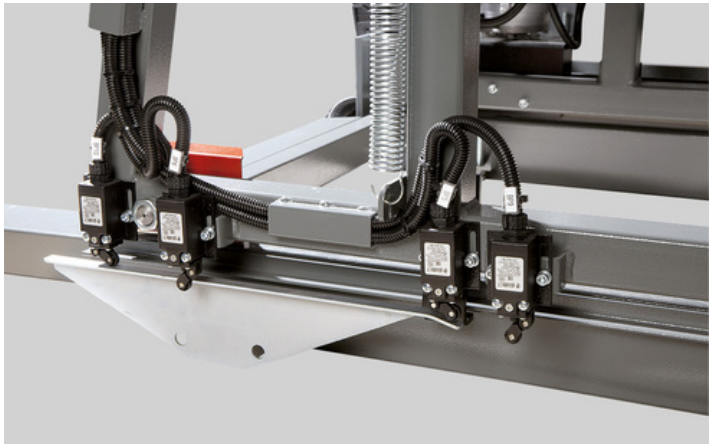
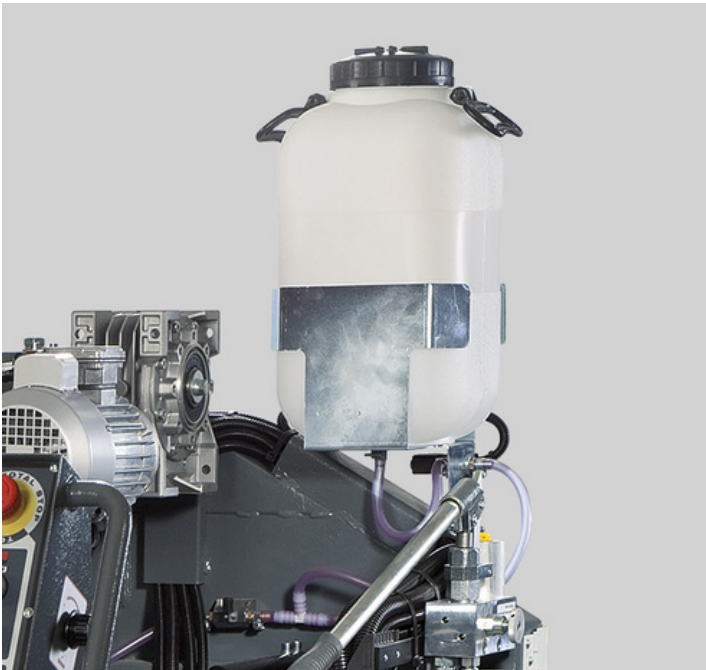
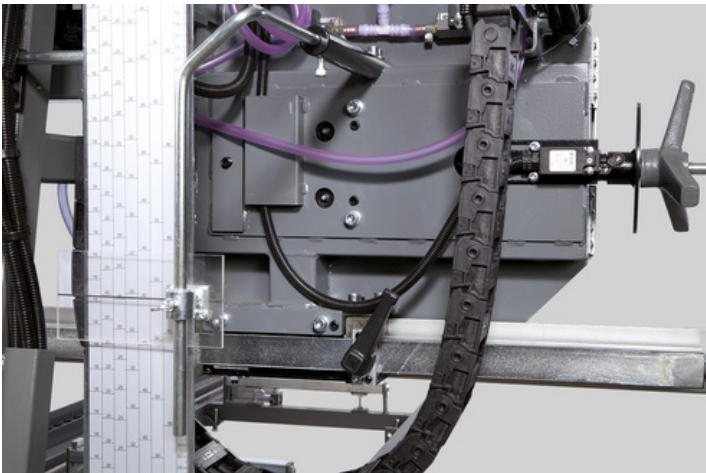
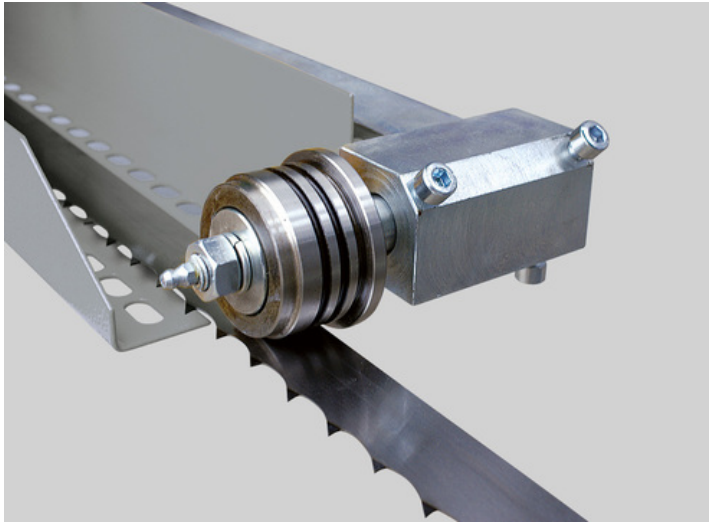
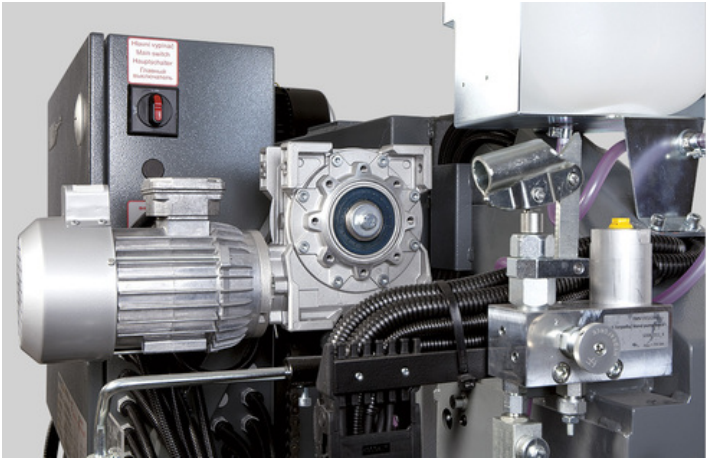
A wide range of accessories simplify and accelerate machine operation and influence its production. It is therefore possible to adapt the sawmill exactly according to the needs of the customer.

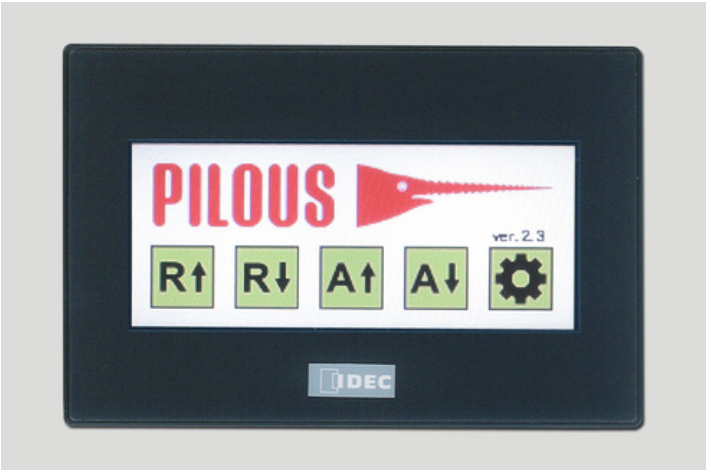
All pictures shown are for illustration purpose only. Actual product may vary due to product enhancement.

## PHOTOGALLERY









## ACCESSORIES

### ACCESSORIES – SPECIAL ACCESSORIES



**Main motor 7.5 kW**

#### **Main motor 7.5 kW**

For even higher performance, for example, when cutting oversized logs or even when cutting very hard materials, especially with Stellite-tipped blades 7.5 kW motor can be recommended.



**Extending section  
1m**

#### **Extending section 1m**

Include basic rails only



**3 m**

**Extending section  
3m**

#### **Extending section 3 m**

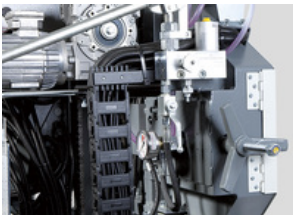
Include: 3x Cross beams, 2x Tilting angle bars  
Variable points: 3x clamps



**Debarker**

#### **Debarker**

Debarker with hard metal tips is designed to remove dirt at points where the sawmill blade cuts into the log. The saw blade do not get blunt quickly. Frequent saw blade exchanges are reduced, the saw blade life, and the productivity of the machine increase.



**Hydraulic saw blade  
tensioner**

#### **Hydraulic saw blade tensioner**

Operated by a hydraulic hand pump with accurate pressure indication. The hydraulic saw blade tensioner is more accurate and convenient.



**Ammeter - blade  
load indicator**

#### **Ammeter - blade load indicator**

The ammeter scale shows the sawmill blade engine load during the cut. It is designed to simplify the selection of the feed speed; it also indicates the saw blade bluntness. A timely exchange of the saw blade increases the life-span and improves the cutting quality.



**Electrically  
controlled guide bar  
710**

#### **Electrically controlled guide bar**

Adjustment of sliding guide bar of the saw blade depending on the log diameter electrically controlled from the central control desk.



**Cant hook**

#### **Cant hook**

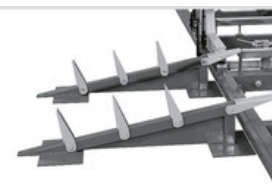
Serves as help with manipulation with logs on machine frame.



**Cam Dog Kit**

#### **Cam Dog Kit**

Consists of a rail and a front and rear clamber/dog.



**Log loading ramp**

#### **Log loading ramp**

Provides easy and safe manipulation on machine cross beams with system of flexible stops.



#### **START/STOP cooling system**

#### **START/STOP cooling system**

Integrated in the cooling system is an electromagnetic through-flow valve, which automatically opens when the saw blade is started and closes when the saw blade is stopped. It substantially lowers the coolant consumption and saves time needed for replenishment of coolant liquid.



#### **START/STOP pressure cooling system**

#### **START/STOP pressure cooling system**

The cooling system consists of a pressure pump in the coolant tank, flow control solenoid valve and two-way jets that spray the sawmill blade both from below and from above. Double-side cooling prevents undesirable stress in the saw band and adhesion of resin from underneath the sawmill blade and thus helps maintain stabler sawmill blade operation, more accurate cut and longer service life. Integrated in the cooling system is an electromagnetic through-flow valve, which automatically opens when the saw blade is started and closes when the saw blade is stopped. It substantially lowers the coolant consumption and saves time needed for replenishment of coolant liquid.



#### **ARCTIC**

#### **ARCTIC**

Version of the machine adapted for work in extremely cold operating temperatures reaching down to - 40 °C. Machine's switch board, control panel and digital measuring are fitted with heating elements. The heating is controlled through a thermostat. Frost-resistant lubricant. Band sawmills use frost-resistant hydraulic oil.



#### **Grease Gun**

#### **Grease Gun**

For regular maintenance of the machine according to the lubrication plan. Metal grease gun for 400g tubes. Equipped with a flexible pressure hose.

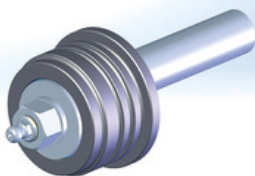


#### **Synthetic Grease LV 2-3**

#### **Synthetic Grease LV 2-3**

400g tube for the grease gun.

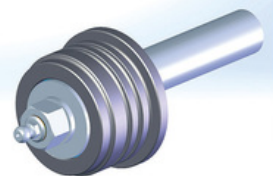
### **ACCESSORIES – CONSUMABLE PARTS**



#### **Blade Roller Kit VK 35**

#### **Blade Roller Kit VK 35**

Hardened roller, bearings, and shaft designed for a sawmill blade 35 mm.



#### **Blade Roller Kit VK 40**

#### **Blade Roller Kit VK 40**

Hardened roller, bearings, and shaft designed for a sawmill blade 40 mm.

**Flat running wheel belt GPK 1550**

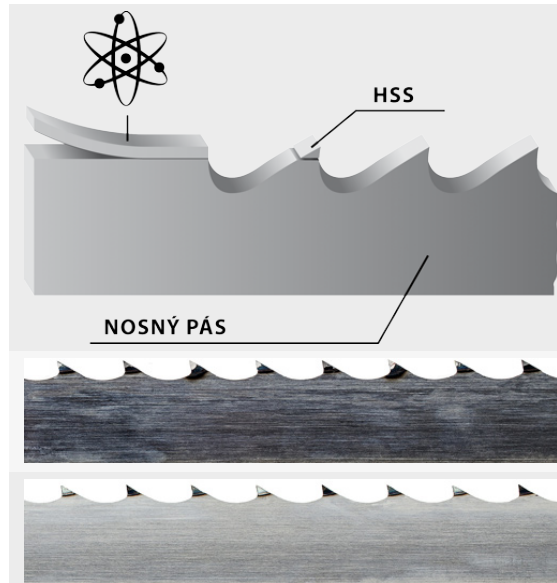


**Wheel Flat Belt GPK  
1550**





- The original sawmill blades PILOUS MAXwood are available in a variety of types which enables you to process any kind of wood.
- The wide product range not only offers more affordable sawmill blades for low-volume cutting, but includes also sawmill blades for fully professional cutting and utmost performance.
- The foundation of all sawmill blades are top-quality German materials and precise workmanship. The quality of the sawmill blades is carefully monitored. All sawmill blades correspond to the strict ISO 9001 norm.
- We have added to our portfolio also an original Munkfors sawmill blade made by the world's leading manufacturer Uddeholm from Sweden.
- Pilous sawmill blades are used in dozens of countries around the world. Any wood you cut, the company Pilous will recommend you a sawmill blade that will fit your needs.



## BiMetal

Sawmill blade with tool steel teeth - completely eliminates the need to sharpen the sawmill blade as well as frequent blade replacement. Use: soft, hard to extremely hard wood.

## HSS

Bearing blade

## Stellite

Sawmill blade with teeth made of Stellite. Tooth setting is completely unnecessary. Use: soft, hard to extremely hard wood.

## Carbon spring steel

The most common sawmill blade for optimum price/performance ratio. Use: soft and hard wood.



Be careful when unpacking welded sawmill blades. They are in a shipping container in tensioned condition. Remove the sawmill blade cover only after fitting it onto the machine.

