

**Pilous**

Železná 9, 619 00 Brno, Czech Republic

Tel.: +420 543 25 20 10

e-mail: [wood@pilous.cz](mailto:wood@pilous.cz), [www.pilous.cz](http://www.pilous.cz)

## CTR 710 GX



4140 x 34-41 x 0,9-1,1 mm

Max. log diameter	710 mm
Max. opening between blade guides	660 mm
Max. elevation of blade	630 mm
Min. blade height from support beam	30 mm
Max. depth of cut	450 mm
Max. log length (standard model)	2,1 m
Length track section	1 m / 3 m
Min. log length	1 m
Saw blade motor	15,5 kW
Vertical feed motor	-
Sawblade	4140 x 35÷40 x 0,9÷1,1 mm
Weight (standard model) inclusive accessories	525 kg
Weight (track section)	25 kg / 97 kg

## DESCRIPCIÓN DEL PRODUCTO

**Feed into the cut and back – hand-operated**

**Arm height adjustment – manual**

**Control panel – on a mobile bridge**

**Log handling – manual**

In contrast to the standard version the band saw is equipped with a professional Kohler two-cylinder four-stroke 15,5 kW (21 HP) petrol engine with electric start. Sufficient engine power ensures high performance of the machine even when processing logs of large diameters in all applications without the possibility of using an electric motor.

Smaller, but truly professional saw band in all respects. Execution of main technical parts, such as the running wheels in their mounts, construction of the saw band arm, engine and feeding systems, etc., are completely identical to those in CTR 800 series or in very powerful CTR 950 Hydraulik series.

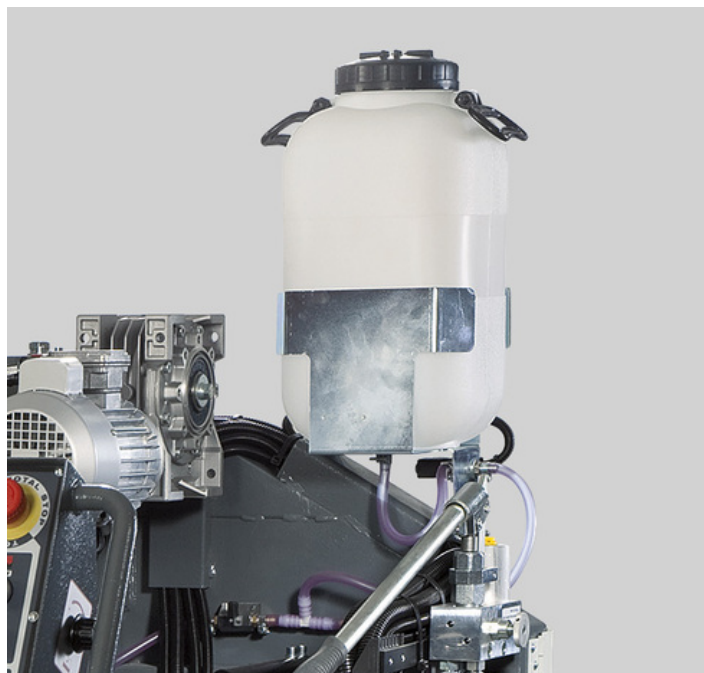
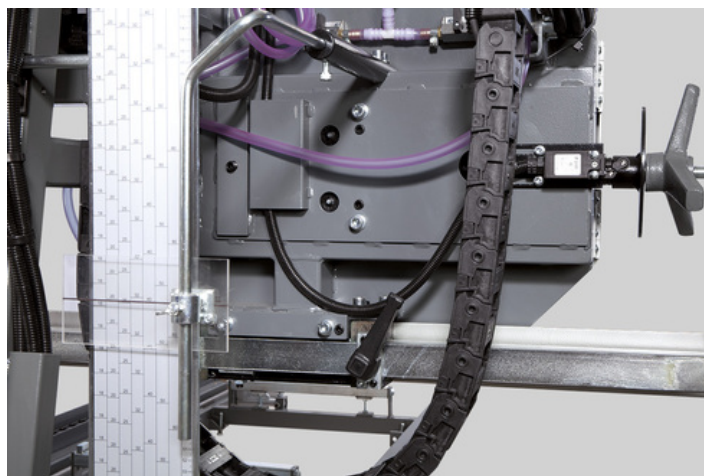
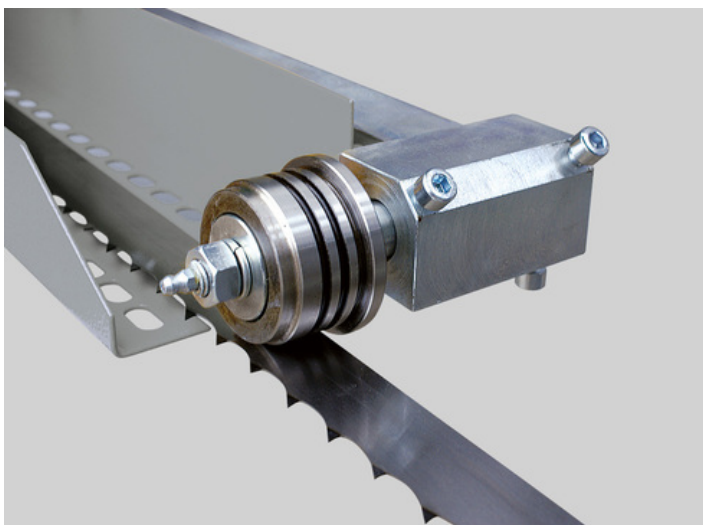
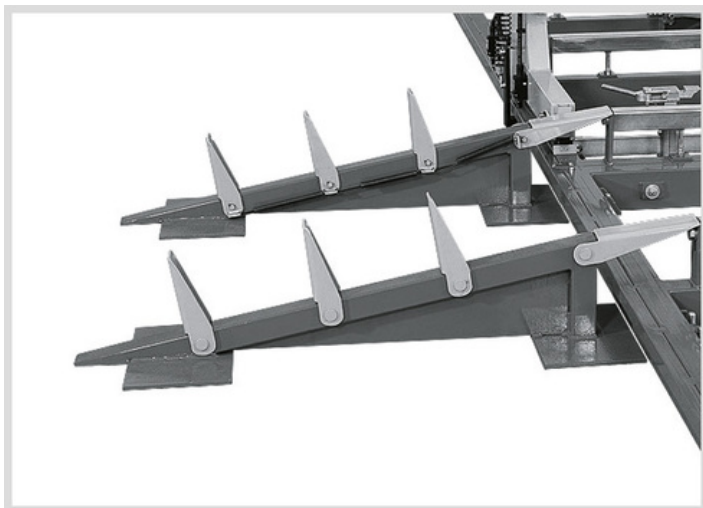
Simple hand feed into the cut and back. Height is adjusted using a hand crank with adjustable scale. In this version of the machine the control panel is placed on a mobile bridge of the saw band arm. Thanks to that the operator has closer access to the workpiece when cutting.

The massive saw band arm is borne on adjustable hard-chromium rods (for moving up and down) which ensure absolute accuracy of saw band arm movement and virtually unlimited service life, if the machine is lubricated regularly. The arm is fitted with running wheels made of high-quality grey cast iron with accurate balancing against vibrations. The wheel has a groove along its circumference. The groove holds a replaceable rubber-textile belt which creates an optimum contact area between the wheel and the saw band.

The sturdily mounted running wheel is powered through a wedge belt by a professional Kohler petrol engine. Centrifugal clutch enables an easy start of the engine and removal of the engine from the saw band when the cut had finished. The tensioning wheel system moves along a sturdy cast iron wedge guide with adjustable pressure bar, which allows highly accurate adjustment without any free travel even in long-term machine operation.

CTR series present the latest trends in construction of log saw bands with a special emphasis on maximum accuracy and long-term service life of the machine while ensuring minimum costs. The machines are designed in an original modular execution which allows easy replacement or adjustment of all main technical sections and their individual parts. This in the long-term perspective reduces the maintenance costs and service times and therefore production stoppages as well.

## GALERÍA DE IMÁGENES



## ACCESORIOS

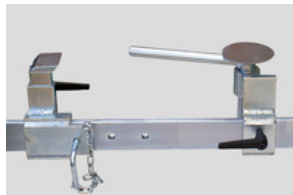
### ACCESORIOS – SPECIAL ACCESSORIES



**Cant hook**

#### **Gancho volteador**

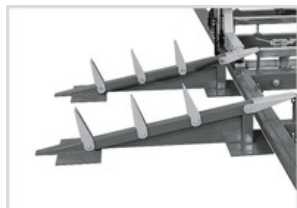
Se utiliza para girar, rodar y manipular troncos. La punta puede usarse para separar troncos o clavarse en el suelo para proporcionar estabilidad durante el trabajo. El gancho volteador se fabrica en longitudes de 79 cm y 125 cm (incluida la punta).



**Cam Dog Kit**

#### **Cam Dog Kit**

Consists of a rail and a front and rear clasper/dog.



**Log loading ramp**

#### **Log loading ramp**

Provides easy and safe manipulation on machine cross beams with system of flexible stops.



**Grease Gun**

#### **Grease Gun**

For regular maintenance of the machine according to the lubrication plan. Metal grease gun for 400g tubes. Equipped with a flexible pressure hose.

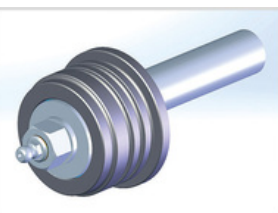


**Synthetic Grease LV  
2-3**

#### **Synthetic Grease LV 2-3**

400g tube for the grease gun.

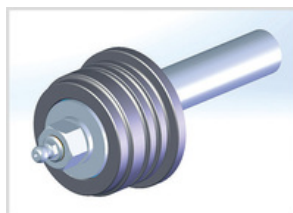
### ACCESORIOS – CONSUMABLE PARTS



**Blade Roller Kit VK  
35**

#### **Blade Roller Kit VK 35**

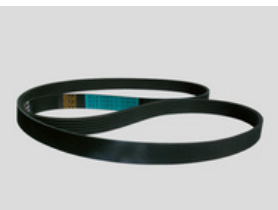
Hardened roller, bearings, and shaft designed for a sawmill blade 35 mm.



**Blade Roller Kit VK  
40**

#### **Blade Roller Kit VK 40**

Hardened roller, bearings, and shaft designed for a sawmill blade 40 mm.

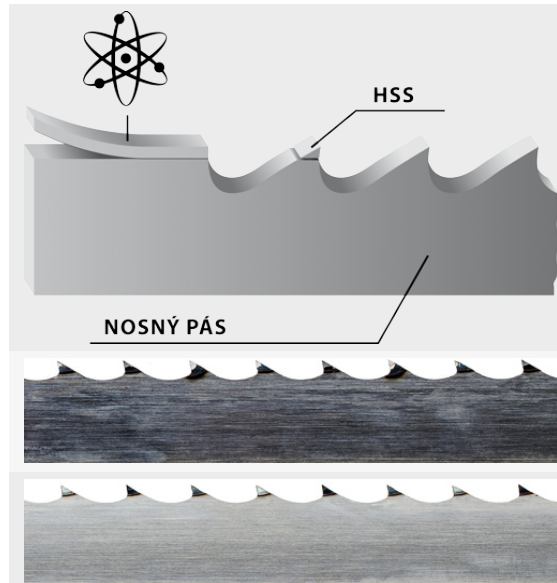


**Wheel Flat Belt GPK  
1550**

#### **Flat running wheel belt GPK 1550**



- The original sawmill blades PILOUS MAXwood are available in a variety of types which enables you to process any kind of wood.
- The wide product range not only offers more affordable sawmill blades for low-volume cutting, but includes also sawmill blades for fully professional cutting and utmost performance.
- The foundation of all sawmill blades are top-quality German materials and precise workmanship. The quality of the sawmill blades is carefully monitored. All sawmill blades correspond to the strict ISO 9001 norm.
- We have added to our portfolio also an original Munkfors sawmill blade made by the world's leading manufacturer Uddeholm from Sweden.
- Pilous sawmill blades are used in dozens of countries around the world. Any wood you cut, the company Pilous will recommend you a sawmill blade that will fit your needs.



### BiMetal

Sawmill blade with tool steel teeth - completely eliminates the need to sharpen the sawmill blade as well as frequent blade replacement. Use: soft, hard to extremely hard wood.

### HSS

Bearing blade

### Stellite

Sawmill blade with teeth made of Stellite. Tooth setting is completely unnecessary. Use: soft, hard to extremely hard wood.

### Carbon / Chrom-Vanadium spring steel

The most common sawmill blade for optimum price/performance ratio. Use: soft and hard wood.



Be careful when unpacking welded sawmill blades. They are in a shipping container in tensioned condition. Remove the sawmill blade cover only after fitting it onto the machine.

