



Pilous

Železná 9, 619 00 Brno, Czech Republic

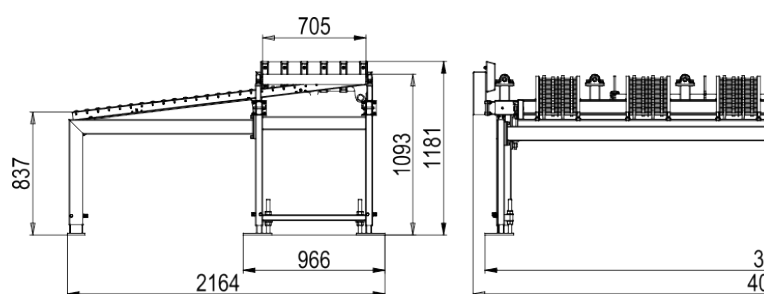
Tel.: +420 543 25 20 10

e-mail: wood@pilous.cz, www.pilous.cz

XRC 7000



Material width	120-700 mm
Material length	2250-6500 mm
Load capacity	250 kg

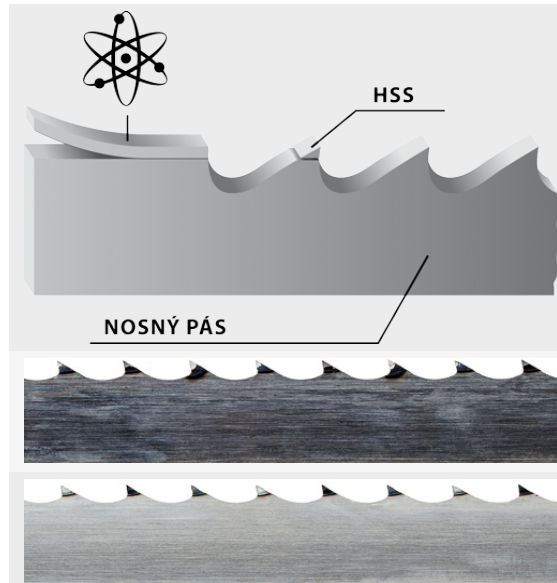


DESCRIPCIÓN DEL PRODUCTO

The timber not intended for further working is pushed off the table by means of tiltable laths. The timber intended for further working (edging) slips to the feed conveyor of the edger saw when the roller table is lifted. The roller table is hydraulically controlled.



- The original sawmill blades PILOUS MAXwood are available in a variety of types which enables you to process any kind of wood.
- The wide product range not only offers more affordable sawmill blades for low-volume cutting, but includes also sawmill blades for fully professional cutting and utmost performance.
- The foundation of all sawmill blades are top-quality German materials and precise workmanship. The quality of the sawmill blades is carefully monitored. All sawmill blades correspond to the strict ISO 9001 norm.
- We have added to our portfolio also an original Munkfors sawmill blade made by the world's leading manufacturer Uddeholm from Sweden.
- Pilous sawmill blades are used in dozens of countries around the world. Any wood you cut, the company Pilous will recommend you a sawmill blade that will fit your needs.



BiMetal

Sawmill blade with tool steel teeth - completely eliminates the need to sharpen the sawmill blade as well as frequent blade replacement. Use: soft, hard to extremely hard wood.

HSS

Bearing blade

Stellite

Sawmill blade with teeth made of Stellite. Tooth setting is completely unnecessary. Use: soft, hard to extremely hard wood.

Carbon / Chrom-Vanadium spring steel

The most common sawmill blade for optimum price/performance ratio. Use: soft and hard wood.



Be careful when unpacking welded sawmill blades. They are in a shipping container in tensioned condition. Remove the sawmill blade cover only after fitting it onto the machine.

